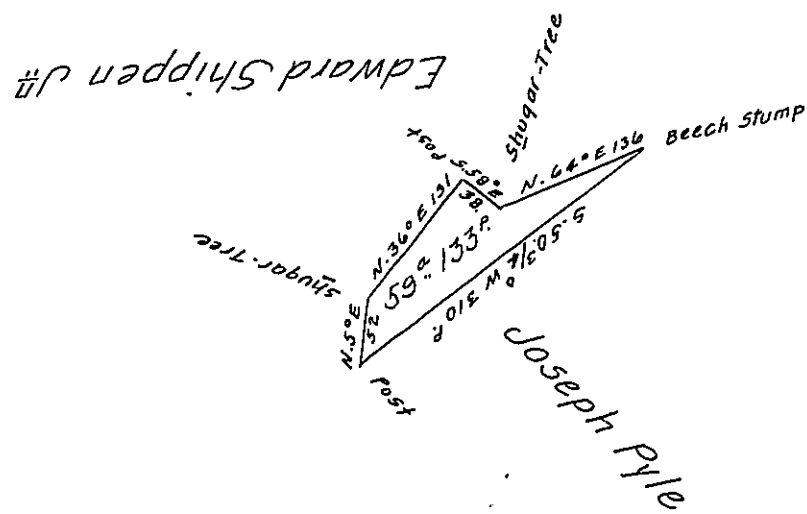


N.



A Draught of a tract of land Situate in Gibson Township Susquehanna County adjoining Edward Shippen on the North and West and Joseph Pyle on the South-East. Surveyed the 22 day of November A.D. 1833. for Thomas W. Morris in pursuance of a Warrant bearing date the 10 day of June A.D. 1833. Containing 59 Acres and 133 perches and the allowance of Six per cent for roads &c.

To

A. D. Olmsted } D.S.

Jacob Spangler Esq.
Surveyor General

N.B. The above draught is protracted on a Scale of 200 perches to the Inch.

A. D. O.

IN TESTIMONY that the above is a copy of the original remaining on file in the Department of Internal Affairs of Pennsylvania, made conformably to an Act of Assembly approved the 16th day of February 1833, I have hereunto set my hand and caused the Seal of said Department to be affixed at Harrisburg, this ninth day of March 1908.

Henry Houck
Secretary of Internal Affairs.